

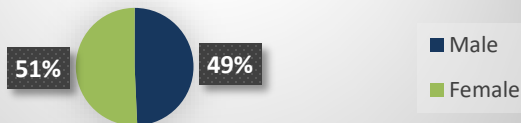


Peoria County COVID-19 Surveillance Report

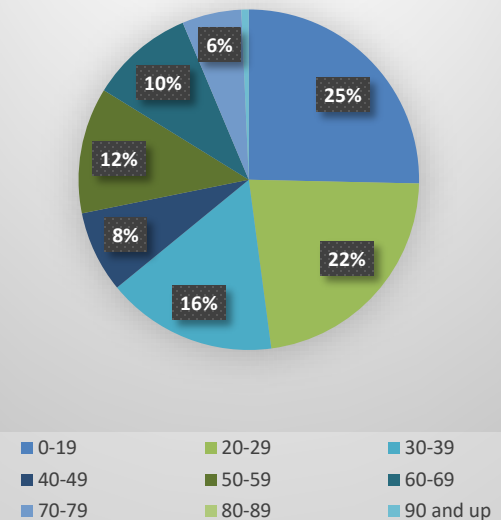
Week 28: July 11, 2020 – July 17, 2020

CDC Week	Peoria County					Comments
	Positive Tests	Number of Tests	Percentage Positive	Hospital Admission	Deaths	
Week 10	1	5	20%	0	0	March 7 – 13
Week 11	5	32	16%	0	0	
Week 12	1	27	4%	1	0	
Week 13	6	73	8%	4	0	McLean County test site opens
Week 14	17	142	12%	3	1	
Week 15	10	150	7%	5	1	
Week 16	26	722	4%	9	0	HHS Peoria test sites open
Week 17	38	1,174	3%	8	1	
Week 18	36	1,439	3%	5	3	
Week 19	22	1,938	1.1%	3	0	
Week 20	15	1,298	1.7%	3	0	
Week 21	50	1,897	2.7%	9	2	
Week 22	66	1,680	3.9%	20	3	
Week 23	80	2,067	3.8%	8	8	
Week 24	39	2,217	1.8%	5	4	
Week 25	67	2,541	2.6%	5	4	
Week 26	71	2,714	2.6%	7	1	
Week 27	128	3,216	4.0%	7	1	
Week 28	142	3,689	3.8%	8	1	
TOTAL	678	23,332	2.9%	110	30	

Gender



Age



Race and Ethnicity

	Week 28		Total	
	Count	Rate per 100,000 population	Count	Rate per 100,000 population
White	74	53.9	376	273.7
Black	45	138.3	215	660.9
Asian	0	0.0	12	153.0
Hispanic/Latino	20	281.7	204	2873.6

State and National Trends

State Trends

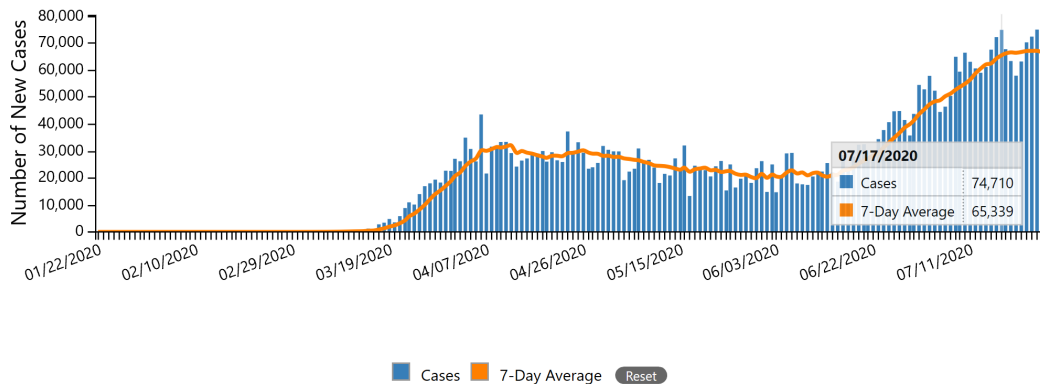
	Positive Tests	Number of Tests	Percent Positive	Deaths
Week 10	46	444	10.4%	1
Week 11	539	3,842	14.0%	4
Week 12	2,441	17,256	14.1%	29
Week 13	5,878	26,506	22.2%	176
Week 14	8,983	39,479	22.8%	386
Week 15	9,688	42,636	22.7%	538
Week 16	12,083	59,469	20.3%	661
Week 17	16,397	95,056	17.2%	662
Week 18	17,705	115,026	15.4%	784
Week 19	16,609	138,888	12.0%	817
Week 20	31,684	297,419	10.7%	1,474
Week 21	12,011	154,629	7.8%	555
Week 22	8,460	149,157	5.7%	522
Week 23	5,283	146,182	3.6%	468
Week 24	4,272	163,902	2.6%	320
Week 25	4,821	179,949	2.7%	267
Week 26	5,459	209,683	2.6%	157
Week 27	6,017	211,108	2.9%	140
Week 28	7,567	254,556	3.0%	128
TOTAL	159,334	2,166,299	7.4%	7,272

- **For week 28** there were **254,556** specimens tested by WHO/NREVSS collaborating Illinois laboratories and IDPH Laboratories; **7,567** specimens tested positive for COVID-19: **2.9% positives.**
- **128** deaths were reported in Illinois for this reporting week.

National Trends

New Cases by Day

The following chart shows the number of new COVID-19 cases reported each day in the U.S. since the beginning of the outbreak. Hover over the bars to see the number of new cases by day.



The 7-Day moving average of new cases (current day + 6 preceding days / 7) was calculated to smooth expected variations in daily counts.

Resources

- Centers for Disease Control and Prevention Website: <https://www.cdc.gov/coronavirus/2019-ncov/cases-updates/cases-in-us.html>
- IDPH Website: <https://www.dph.illinois.gov/covid19/covid19-statistics>