



# 2016-2017 Influenza Season Surveillance Report

Everyone 6 months and older should get a flu vaccine

## Summary (Week 46: November 13-19, 2016)

Current influenza activity is **LOW** in the Peoria Region, with OSF Saint Francis Medical Center and UnityPoint Health Methodist | Proctor reporting 13 positive influenza tests.

The Illinois Department of Public Health reported state-wide flu activity as **SPORADIC** (Lab confirmed influenza cases OR increase in influenza-like illnesses - ILI).

## Peoria Region Trend

Week	Health Care Providers: SFMC, UP-M/P					Comment
	Positive Tests	Number of Tests	Percentage Positive	Admission	ICU Admission	
Week 44	10	134	7.5%	0	0	
Week 45	15	123	12.2%	0	0	
Week 46	13	152	8.6%	0	0	
<b>TOTAL</b>	<b>38</b>	<b>409</b>	<b>9.3%</b>	<b>0</b>	<b>0</b>	

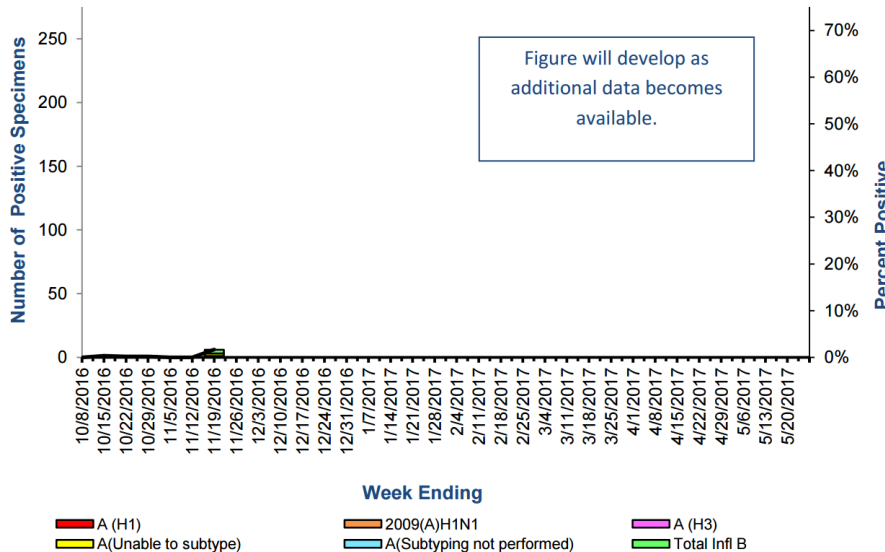
## Reporting to Peoria City County Health Department:

- 0 influenza w/ ICU hospitalization past 30 days

## State and National Trends

### State Trends

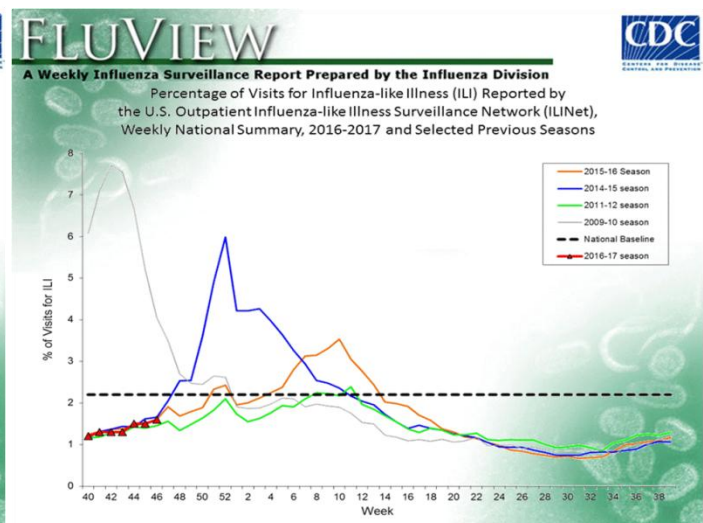
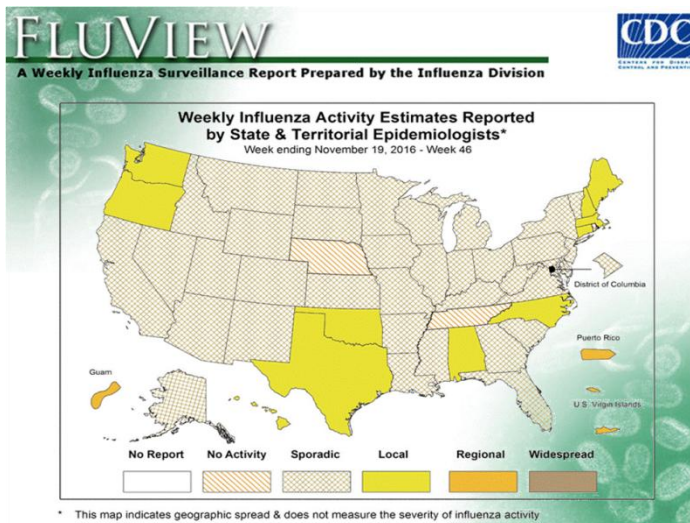
Influenza Isolates Reported by WHO/NREVSS Collaborating Laboratories, IDPH Lab & ACL Labs, Illinois, Influenza Season 2016-2017



- For this reporting week there were 353 influenza specimens tested by WHO/NREVSS collaborating Illinois laboratories and IDPH Laboratories; 6 specimens tested positive for Influenza: **1.69% positives**
- **Two (2) influenza-associated Intensive Care Unit (ICU)** admissions were reported in Illinois for this reporting week.
- For this reporting week, **one influenza outbreak** were reported in Illinois.

## National Trends

- The proportion of outpatient visits within Illinois for influenza-like illness (ILI) was 1.36% which is **below** the national regional 5 baseline.



## Resources

- Centers for Disease Control and Prevention Influenza Website: <http://www.cdc.gov/flu/>
- IDPH Seasonal Influenza Website: <http://www.dph.illinois.gov/topics-services/diseases-and-conditions/influenza/surveillance>

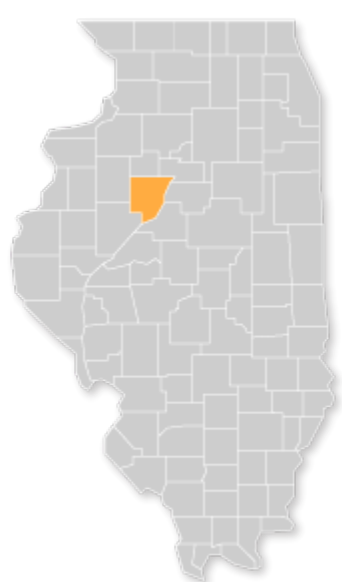


Public Health  
Prevent. Promote. Protect.

Peoria City/County  
Health Department  
www.pchd.org

# 2016-2017: INFLUENZA WEEKLY SURVEILLANCE

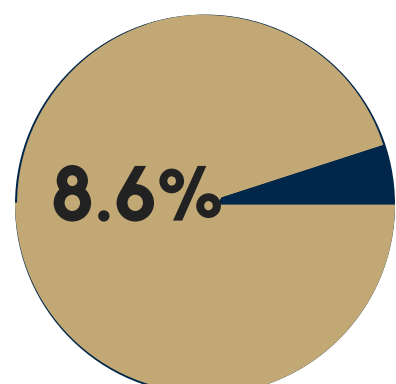
WEEK 46: NOVEMBER 13-19, 2016



# LOW

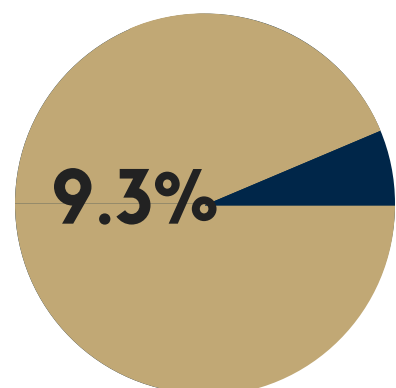
## Influenza activity in Peoria Region

### PERCENT POSITIVE TESTING



#### WEEK 46

Total of 152 tests; 13 positive tests  
All positives were Subtype B



#### YEAR TO DATE

Reporting began Week 44

Total of 409 tests; 38 positive tests  
3% Subtype A, 97% Subtype B

### INFLUENZA ACTIVITY



**EVERYONE 6 MONTHS AND OLDER SHOULD GET A FLU VACCINE**



### FLU SYMPTOMS

- Fever
- Cough, sore throat, runny nose
- Headache
- Muscle Aches
- Fatigue

